

## Echo Sync for Elite 3E

DATA SHEET

### Streamline Your Content Management Workflow with Automated Records Sync for Elite 3E and Your Other Essential Business Applications

Is your firm evaluating ways to improve operational efficiencies and reduce costs? Integration technologies are vital in today's world. They help keep remote workers, clients, and business partners connected and working productively.

Now you can securely sync records for documents, invoices, matters, and metadata between your business applications and Elite 3E.

#### Build in Efficiency - Integrate and Automate

**Echo Sync (Echo)** is an API-based enterprise content synchronization product designed to automate processes, support internal and external collaboration, and help maintain content governance.

**Echo Automate** works in tandem with Echo, automatically detecting changes, syncing content or records, and even creating matter records, with no user or admin needed.

#### Manage Content and Records - between apps on-premise, hybrid, or cloud

Configure sync rules based on metadata mapping and triggers. Syncs are automatically initiated, while IT maintains full administrative oversight using the Echo Management Studio. Schedule syncs every one minute or as preferred.

→ Automatically sync matter metadata **one-direction**, from another business app into Elite 3E to enable secure and efficient collaboration.

↻ **Changes** to content records from within your other application will be automatically **synced** to Elite 3E, keeping that content up-to-date for users. Changes made in Elite 3E will not be synced back to the other system.

→ **Publish content records**, such as posted invoices, from Elite 3E to your other business applications to eliminate double entries, save time, avoid errors, and provide collaborators with timely and up-to-date information.

#### Automate Processes

Echo Automate detects new matter records as they are created in your DMS, for example, then looks in Elite 3E for the corresponding matter. The two sites are linked, and an ongoing, one-way records sync is started from the DMS to Elite 3E. If no matching record is found, Automate creates one, links the two sites, and initiates the sync.

#### Report and Notify

Configure email notifications for admins to receive metadata sync confirmations and error reports. Retain audit and history data with detailed reporting.



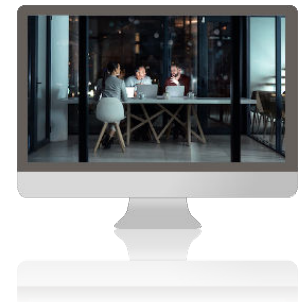
Provide up-to-date matter and financial information needed to make decisions

Eliminate manual processes, double entry, and errors with automated processes

Improve user efficiency with access to needed content

Enable efficient and secure collaboration

#### CONNECT TO ALL YOUR BUSINESS APPLICATIONS



[Complete list of our connectors here, including:](#)

Amazon S3, Azure Storage, Box, eDOCS, HighQ, iManage, Legal Tracker, Litera, MS365, NetDocuments, Salesforce, Teams...