

Husch Blackwell Automates Large-volume Data Transfer Processes Significantly Impacting ROI

Anaqua's Velocity Migrate Product Cuts Delivery Time by 75%

HUSCH BLACKWELL

Innovative Am Law 100 firm with a client-focused collaborative approach

Husch Blackwell leads clients from where they are to where they want to be. From offices in 18 U.S. cities, they deliver legal insight and business leadership that helps clients identify smart solutions, advance their goals, and move forward.

Industry teams collaborate across practice areas to deliver in-depth solutions to the most complex business challenges. Husch Blackwell brings together the best legal minds and reaches beyond law to include experienced industry professionals. This approach gives clients a greater perspective and ensures forward-thinking results.

Challenges

As the Information Governance Senior Manager at Husch Blackwell, Jordan McKee is tasked with ensuring process efficiencies and accuracy for the complete life cycle of all information assets. A substantial piece of her department's responsibilities entails coordinating the inbound and outbound movement of data related to lateral attorney transitions and client requests.

It became apparent the group needed to find a way to automate their processes when Jordan's team received a sizable data migration request from a client working through a divestiture. She allocated a team of five people working full time for a month to export data for 1,000 matters. The client then requested 3,000 more matters to be moved within a tight deadline for completion. The project would require significant resources over an extended period of time. Realizing the deadline was impossible to meet, Jordan met with Gene D'Aversa, Director of Knowledge Management for the IT Information Technology Department at Husch Blackwell to find a solution.

"This particular request stood out because of the volume (125,000 documents). It was nearly equal to the amount of outbound matters of this scale we process in a year. Each matter was relatively small, with approximately 60 documents per matter, which made the process more complicated. Because of the client's timeline restriction, completing this transition on time would have been impossible without using the Velocity tool." – Jordan McKee, Information Governance Senior Manager, Husch Blackwell

Solution

Gene and Jordan sought to streamline the process of exporting, as well as importing, large sets of data for this request and others going forward.



Industry

Legal

About the Project

- The firm sought a solution to streamline and standardize their processes to handle large-volume content exports (and future imports)
- One client request for 4,000 matters to be exported was more than the IG team normally processed annually

Challenges

- The firm's IG team resources were maxed out with a notably large and complex client request for processing data
- The client's required timeline was not possible without utilizing Anaqua's Velocity Migrate product

"The ROI impact of automating this process is significant. Using Velocity enables us to turn these requests around in less than one-fourth of the time without overwhelming our team."

– Gene D'Aversa,
Director of Knowledge
Management, IT
Information Technology

Husch Blackwell Automates Large-volume Data Transfer Processes Significantly Impacting ROI

They chose the Velocity Migrate tool (Velocity) for its robust features and flexibility.

Other solutions were considered but did not fully meet their criteria. They required the ability to map content to the destination system and control the data flow and timing of the transfers to reduce system user disruption. Ultimately, the goal was to automate the transition process to reduce the inordinate amount of time and resources required by the IG team to complete these requests.

After Jordan's five-person team tackled the first 1,000 matters, Velocity was brought in for the remaining 2,000 matters, which took two weeks to finish. Part of the two weeks included time to build out Velocity's reusable migration templates. Gene estimates the completion time for future projects of this size will be in the neighborhood of only days. And because of Velocity's extensibility, Husch plans to use the product in the coming months to improve the efficiency of their larger data imports also.

"No other product can handle large volumes of data and deliver on the key items we need: content mapping, configurable and reusable templates, performance adjustments, and the ability to schedule the move after hours with less impact to the whole system." – Gene D'Aversa, Director of Knowledge Management, IT Information Technology Dept., Husch Blackwell

Benefits

Going forward, the IG team will leverage the Velocity templates, giving them a standard way to handle large-volume exports. They plan to develop similar standards using Velocity to process their larger import projects also. The time and effort saved will free up the team for other requests.

Benefits from automating and streamlining the export of matters included:

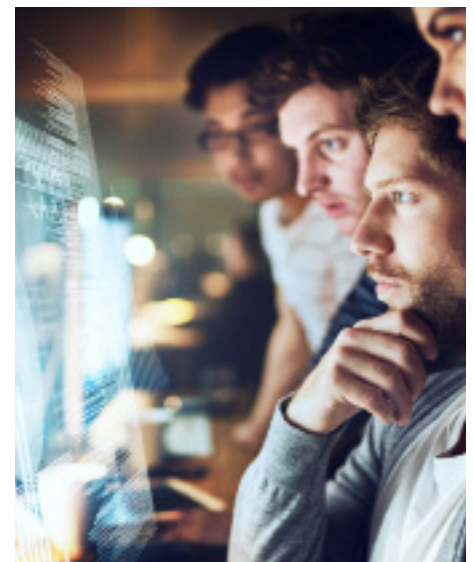
- Enabled IG team to move documents in one-fourth the time using Velocity
- Improved productivity by 75%
- Significant positive impact on ROI
- Ability to handle large-volume transfer requests efficiently
- Flexible scheduling
- Standardized processes
- Velocity is configurable for future changes
- Velocity is extensible and will be used to create more efficient imports for large-volume requests

Solution

Velocity Migrate

API-based migration product

- On-premise, cloud, or hybrid capabilities (API to API)
- Flexible configuration:
 - Reusable migration templates save days of scripting time
 - Optional C# scripting
- Advanced metadata mapping and custom translations
- Source data validation helps identify issues for clean-up prior to migration
 - Test, verify, and identify issues prior to and during runs
 - Duplicate document detection across multiple sources
- Matter-centric:
 - Preserve workspace structures, folders, and original document numbers
 - Create matter-centric workspaces in target repository on-the-fly
- Delta syncs mean less downtime
- Error reporting, batch error reprocessing
- Rollback
- Performance tuning
- Automated scheduling



We are content integration experts providing in-depth solutions to connect, sync, or migrate data across on-premise or cloud-based ECM solutions with external business applications. We're dedicated to improving workflow and business processes by extending applications and connecting people with content. We supports a growing list of 45 connectors and provides comprehensive migration and synchronization tools to 500+ customers and 30+ partners worldwide. We proudly serve customers of all sizes, including Fortune 500 businesses, Am Law 100 and 200 firms, and government entities.

Info@AnaquConnectivity.com | +1 970.776.8300 | www.seeunity.com